



Special Education

Resource Guide
& Catalog

AbleNet[®]
www.ablenetinc.com

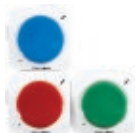
Table of Contents

Communication Solutions	4
Switches	8
Switch Accessories	11
Wireless Switches	12
Switch Interfaces	13
Computer Mice	15
Keyboards	17
Mounting Arms	21
Mounting Plates	22
Activity Supports	23
Toys	24

Our Guiding Principles

AbleNet is committed to you, our customers, employees, and supplier partners. We know you expect more from us, and we're working to deliver. Our guiding principles today cover the environment, safety, our commitment to positive outcomes, world-class products and service, and more. *More information at www.ablenetinc.com > Resources > Guiding Principles.*

What's New



TalkingBrix™ 2

Improved sound quality and improved recording method.
See [page 4](#).



iTalk4™ with Levels

Four message locations, amplified dual speaker sound output, and sleek modern design. See [page 5](#).



SuperTalker™ FT

Now with Feather Touch activation surface that's easy to activate.
See [page 5](#).



Plate Switch

Activation surface is now 350% larger! See [page 10](#).



BIGtrack™ Wireless

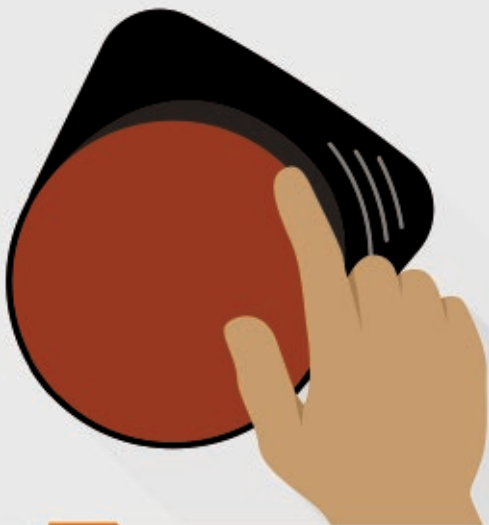
Large trackball mouse with wireless connection via Bluetooth or included USB wireless adapter. See [page 15](#).



TrackerPro™ 2

All new design for hands-free mouse use. Compatible with iOS 13 and iPadOS 13. See [page 15](#).

Four Awesome Ways to Use a BIGmack



1

Use your BIGmack to make a request such as:

- “Can you help me?”
- “I need a break.”
- “Can we read a book together?”

2

Use your BIGmack for social greetings like:

- “How are you this morning?”
- “Are you going to the basketball game tonight?”
- “What is your name?”

3

Use your BIGmack as a switch with a message to add context to what is happening:

- “Use with Hitch 2 to turn pages in a PDF book on a computer.”
- “Use with a PowerLink 4 to make smoothies.”
- “Use with an All-Turn-It Spinner for turn taking during an activity.”

4

Use multiple BIGmacks to make choices such as:

- Yes or no
- Food or beverages during a meal
- Different answers during a quiz

Communication Solutions



Colored caps included

BIGmack®

10002100

- Play a single message up to 2-minutes long
- 5-in activation area
- Switch accessible



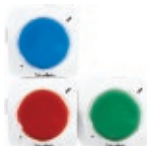
Colored caps included

LITTLEmack™

10002400

- Play a single message up to 2-minutes long
- 2.5-in activation area
- Switch accessible

NEW



TalkingBrix™ 2

10000032

- Improved sound quality and new message recording method
- Includes 3 TalkingBrix
- Each play a single message up to 10-sec long
- 1.8-in activation area



Colored caps included

BIG Step-by-Step™ with Levels

10002300

- Play multiple messages in the sequence they were recorded in
- 3 recording levels with a total record time of 4-minutes
- 5-in activation area
- Switch accessible



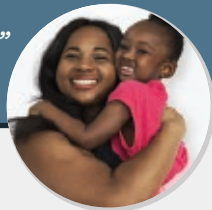
Colored caps included

LITTLE Step-by-Step™ with Levels

10002600

- Play multiple messages in the sequence they were recorded in
- 3 recording levels with a total record time of 4-minutes
- 2.5-in activation area
- Switch accessible

"I have always found your customer service to be top notch. My daughter uses one of your products every day and it has been instrumental in her communication gains. Thank you!"



Communication Solutions



iTalk2™ with Levels

10003300

- 1-message per side
- 3 recording levels with a total record time of 4-minutes
- 2.5-in activation area on each side
- Switch accessible

NEW



iTalk4™ with Levels

10000028

- 4-message locations with amplified dual speaker sound output
- 3 recording levels with a total record time of 6-minutes
- 2.5-in activation area
- Switch accessible



TalkTrac™

10002000

- Wear on your wrist
- 4-messages per recording level
- 2 recording levels with a total record time of 80-seconds



Colored caps included

LITTLE Step-by-Step™ Choice with Levels

10003600

- Record a sequence of messages and the user chooses between them for playback
- 3 recording levels with a total record time of 4-minutes
- 2.5-in activation area
- Switch accessible

NEW



SuperTalker™ FT

10000031

- New Feather Touch activation surface that's easy to activate
- Customize to have 1, 2, 4, or 8 messages
- 8 recording levels with a total record time of 16-minutes
- Switch accessible

"It is hard to improve upon the customer service I have had over the past several years!"



Communication Solutions



QuickTalker™ 7

10003501

- 3 core messages stay consistent across all 5 recording levels
- An additional 4 message locations can change on each of the 5 recording levels
- 5 recording levels with a total record time of 6-minutes



QuickTalker™ 12

10003502

- 3 core messages stay consistent across all 5 recording levels
- An additional 9 message locations can change on each of the 5 recording levels
- 5 recording levels with a total record time of 12-minutes



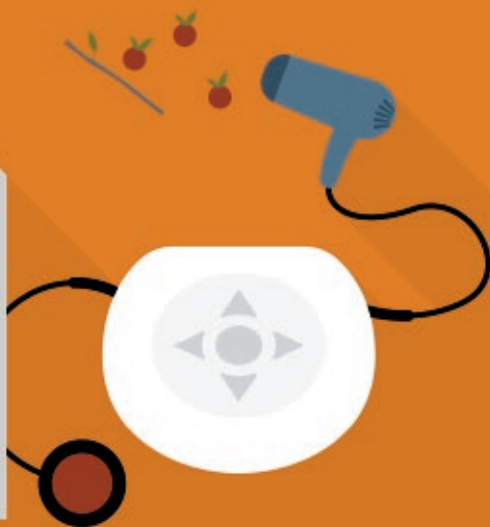
QuickTalker™ 23

10003503

- 3 core messages stay consistent across all 5 recording levels
- An additional 20 message locations can change on each of the 5 recording levels
- 5 recording levels with a total record time of 20-minutes

Feed the Bear Activity

Connect a blow-dryer to your PowerLink4 and activate it with a Jelly Beamer wireless switch or Jelly Bean wired switch to feed the hungry bears in your campsite!



Use a BIGmack for the activity so individuals can request a turn.



Use a All-Turn-It Spinner with images of different foods so students can randomly select a food to feed the bear.



Switches



Colored caps included

Jelly Bean®

10033400

- 2.5-in activation area
- 2.5-oz of force to activate
- Auditory and tactile feedback



Colored caps included

Big Red®

10033500

- 5-in activation area
- 5.5-oz of force to activate
- Auditory and tactile feedback



100SPR
100SPBL
100SPG
100SPBK
100SPY

Specs®

Choose color above

- 1.4-in activation area
- 3.5-oz of force to activate
- Auditory and tactile feedback



Colored switch top labels included

Micro Light

58500

- 1.7 x 0.5-in activation area
- 0.4-oz of force to activate
- Auditory and tactile feedback



BIG Candy Corn™

10000025

- 3.5-in activation area
- Proximity sensor activates when within 1-in of switch top or when touched
- Auditory and visual feedback



LITTLE Candy Corn™

10000005

- 1.9-in activation area
- Proximity sensor activates when within 0.5-in of switch top or when touched
- Auditory and visual feedback

Switches



- 57100
- 57600
- 57200
- 57000
- 57500

Buddy Button™

Choose color above

- 2.5-in activation area
- 5-oz of force to activate
- Auditory and tactile feedback



BIG Buddy Button™ Red

56100

- 4.5-in activation area
- 5.3-oz of force to activate
- Auditory and tactile feedback



Pillow Switch

58750

- 3.25-in soft activation area
- 6-oz of force to activate
- Auditory and tactile feedback



- Colored switch top labels included

Mini Cup Switch

58080

- 1-in activation area
- 4.2-oz of force to activate
- Auditory and tactile feedback
- Water and dust resistant – IP67 rated



- Colored switch top labels included

Cup Switch

58070

- 1.8-in activation area
- 12-oz of force to activate
- Auditory and tactile feedback
- Water and dust resistant – IP67 rated

“Customer service has been extremely responsive and awesome. I absolutely love AbleNet University!”



Switches



Wobble Switch

10000024

- Activate by moving 4-in flexible arm in any direction
- 4.65-oz of force to activate
- Auditory and tactile feedback



Colored
switch top
labels
included

Plate Switch

10000047

- New activation area is 350% larger!
- 3.15-in activation area
- 4-oz of force to activate



Colored
switch top
labels
included

Trigger Switch

10034900

- 0.5-in activation area
- 11-oz of force to activate
- Auditory and tactile feedback



String Switch

100SS

- Pull string to activate
- 1.5-oz of force to activate
- Auditory and tactile feedback



Grasp Switch

58650

- Squeeze to activate
- 11-oz of force to activate



Chin Switch

10034800

- 3.8-oz of force to activate

Switches



Imperium Sip and Puff Switch

86442

- Sip and puff activation
- Includes gooseneck mount
- 1/8-in stereo plug connection



Mini Joystick with Push

50200

- 2-in joystick with four directions and push
- 4.5-oz of force to activate
- Tactile feedback
- 9-pin D female connection

Switch Accessories



Dual Switch Latch and Timer

100DSLAT

- Add modes of control to any switch accessible toy or appliance



Battery Device Adapter AA/AAA Size

100BDAAA



Battery Device Adapter C/D Size

100BDACD

"I love your quality and durability!"



Wireless Switches



Blue2™

10000033

- Connects with Bluetooth
- Sends keystrokes space, enter, 1, 3, ~1 and ~3
- Record up to 4 keystrokes of your choice for a switch



Colored caps included

Jelly Beamer®

10034200

- Requires AbleNet wireless receiver or PowerLink4
- 2.5-in activation area
- 2.5-oz of force to activate



Colored caps included

Big Beamer®

10034300

- Requires AbleNet wireless receiver or PowerLink4
- 5-in activation area
- 5.5-oz of force to activate



Mini Beamer™ Transmitter

10000013

- Requires AbleNet wireless receiver or PowerLink4
- 2.2-in activation area
- Proximity sensor activates when within 0.5-in of switch top or when touched



Original Receiver

10034400

- Requires AbleNet wireless transmitter
- 1/8-in mono plug connection



Mini Beamer™ Receiver

10000014

- Requires AbleNet wireless transmitter
- Switch, latch, timed minutes, and timed seconds
- 1/8-in mono plug connection

Switch Interfaces



Blue2™

10000033

- Connects with Bluetooth
- Sends keystrokes space, enter, 1, 3, ~1 and ~3
- Record up to 4 keystrokes of your choice for a switch



Hook+™

10000018

- Compatible with iOS Switch Control on iPad or iPhone
- Connect 1 to 4 switches
- Requires Lightning Connector



Switch Click™ USB

10034601

- Compatible with switch accessible software that uses keystrokes on macOS, Windows, and Chrome
- Requires USB A connection



Hitch® 2

10000021

- Compatible with switch accessible software that uses keystrokes on macOS, Windows, or Chrome
- Includes mode for mouse control with joystick or switches
- Connect 1 to 5 switches
- Requires USB A connection

"I think AbleNet provides durable products that are safe and last a long time. I still have a Big Red switch that I purchased 30-years ago and it still works!"



Switch Access Guides



Learn switch access on iPad and iPhone

Download full guide at:
www2.ablenetinc.com/iOS13

Learn switch access on an Android phone or tablet

Download full guide at:
www2.ablenetinc.com/Android9

Simplify switch access on iPad and iPhone

Download full guide at:
www2.ablenetinc.com/Recipes

Computer Mice

NEW



BIGtrack™ Wireless

10000039

- 3-in trackball
- Wide base provides stability while using
- Connect switches for left or right clicks
- Wireless connection via Bluetooth or included USB wireless adapter
- Compatible with most macOS, Windows, and Chrome computers



BIGtrack™ 2

12000006

- 3-in trackball
- Wide base provides stability while using
- Connect switches for left or right clicks
- Requires USB A connection
- Compatible with most macOS, Windows, and Chrome computers

NEW



TrackerPro™ 2

10000034

- All new design
- Hands free mouse controlled with head movements
- Connect switches for left or right click, or use a dwell selection software
- Requires USB A connection
- Compatible with most macOS, Windows, Chrome, and iOS/iPadOS 13 devices



TinyMouse™

12000033

- Half the size of a standard mouse
- Requires USB A connection
- Compatible with most macOS, Windows, Chrome and iOS/iPadOS 13 devices



ChesterMouse™

20030800

- Simple 1-button design (left click only)
- Requires USB A connection
- Compatible with most macOS, Windows, Chrome and iOS/iPadOS 13 devices

Computer Access in the Classroom

Hands free control of an iPad with TrackerPro 2.



The large 1-in keys of the BigBlu KinderBoard are easier to access and see than standard keys on a Chromebook.

Connect Hitch 2 to your interactive whiteboard and use a switch to turn the page in a digital book during a group reading activity.



Keyboards



LearningBoard™

12000028

- Color-coded vowels, consonants, numbers, and function keys
- Standard size keys
- USB Type A connection



LessonBoard™

12000029

- Color-coded finger layout to show correct finger placement
- Standard size keys
- USB Type A connection



LessonBoard™ Pro

12000030

- Color-coded finger layout to show correct finger placement
- Keys do not have letters printed on them to help with keyboard memorization
- Standard size keys
- USB Type A connection



Keys-U-See® Black

10090104

- High-contrast lettering makes keys easier to read
- Standard size keys
- USB Type A connection



Keys-U-See® Yellow

10090103

- High-contrast lettering makes keys easier to read
- Standard size keys
- USB Type A connection



Keys-U-See® Ivory

10090102

- High-contrast lettering makes keys easier to read
- Standard size keys
- USB Type A connection

Keyboards



BigKeys™ LX Color

12000009

- Large 1-in keys are easier to see and activate for users with fine motor impairments
- Durable metal construction
- USB Type A connection



BigKeys™ LX Black

12000007

- Large 1-in keys are easier to see and activate for users with fine motor impairments
- Durable metal construction
- USB Type A connection



BigKeys™ LX White

12000011

- Large 1-in keys are easier to see and activate for users with fine motor impairments
- Durable metal construction
- USB Type A connection



BigKeys™ LX Yellow

12000012

- Large 1-in keys are easier to see and activate for users with fine motor impairments
- Durable metal construction
- USB Type A connection



VisionBoard™ 2 Yellow

12000024

- Large 1-in keys are easier to see and activate for users with fine motor impairments
- USB Type A connection



VisionBoard™ 2 White

12000022

- Large 1-in keys are easier to see and activate for users with fine motor impairments
- USB Type A connection

Keyboards



KinderBoard™

12000019

- Large 1-in keys are easier to see and activate for users with fine motor impairments
- Color-coded consonants, vowels, numbers, and function keys
- USB Type A connection



myBoard™ Lowercase

12000020

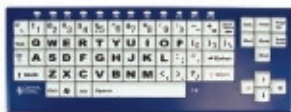
- Large 1-in keys are easier to see and activate for users with fine motor impairments
- Lower-case letters on keys
- Color-coded consonants, vowels, numbers, and function keys
- USB Type A connection



BigBlu KinderBoard™

12000017

- Large 1-in keys are easier to see and activate for users with fine motor impairments
- Color-coded consonants, vowels, numbers, and function keys
- Bluetooth connection



BigBlu VisionBoard™

12000018

- Large 1-in keys are easier to see and activate for users with fine motor impairments
- Bluetooth connection



VisionBoard™ Wireless Black Keys

12000025

- Large 1-in keys are easier to see and activate for users with fine motor impairments
- Wireless connection via 2.4GHz USB receiver



Keys-U-See® Wireless with Mouse

10090401

- High-contrast lettering makes keys easier to read
- Standard size keys
- Includes mouse and keyboard
- Wireless connection via 2.4GHz USB receiver

Keyboards



Keyguard for Large Key with Function Keys

80000056

- Compatible with BigBlu VisionBoard, BigBlu KinderBoard, VisionBoard Wireless, KinderBoard, VisionBoard 2



Keyguard for Large Key without Function Keys

80000057

- Compatible with MyBoard Lowercase



Keyguard for BigKeys™ LX

80000028

- Compatible with all BigKeys LX keyboards

Mounting Arms



Friction Knob UMS

100USMSFK

- Three adjustable joints
- Includes super clamp for attaching mount to table, wheelchair, or bed frame



Latitude® Arm

10043000

- Three adjustable joints that rotate 360-degrees
- Variable length for precise positioning
- Constructed from super strong aircraft grade aluminum
- Includes super clamp for attaching mount to table, wheelchair, or bed frame



Table Top Suction Mount Arm

80000103

- Quickly and easily attaches to smooth surfaces with two suction cups
- Adjustable mini arm for fine positioning



Gooseneck

66305

- Flexible arm can easily be moved into place
- Includes super clamp for attaching mount to table, wheelchair, or bed frame



Hover

10000012

- Ultra lightweight carbon fiber design
- Three adjustable joints
- Includes super clamp for attaching mount to table, wheelchair, or bed frame

"I love AbleNet products and service is top-notch!"



Mounting Plates



Adjustable iPad Cradle (9.7/10.5)

80000104

- Compatible with 9.7" and 10.5" iPads with or without a case
- Common compatible cases include OtterBox Defender, Griffin Survivor, and Gumdrop Droptech



Adjustable iPad Pro Cradle (12.9)

80000105

- Compatible with 12.9" iPads with or without a case
- Common compatible cases include OtterboxDefender and Griffin Survivor



Universal Mounting Plate

80000015

- Connect to any AbleNet mounting arm
- Compatible with the following switches: Big Beamer, Big Buddy Button, BIG and LITTLE Candy Corn, Big Red, Blue2, Buddy Button, Cup, Jelly Beamer, Jelly Bean, Mini Beamer, Mini Cup, Pillow, Plate, Specs, String, and Trigger
- Compatible with the following communication devices: BIGmack, BIG Step-by-Step (all versions), iTalk 2, LITTLEmack, LITTLE Step-by-Step (all versions), and TalkingBrix



Micro Light Mounting Plate

66100

- Compatible with Micro Light switch



Wobble Switch Mounting Plate

80000085

- Compatible with Wobble switch

Activity Supports



PowerLink® 4

(US) 10010701

(CE) 10010702

- Control two separate A/C electrical appliances with a switch
- Compatible with wired or AbleNet wireless switches
- Direct, latch, and timed minutes and seconds modes



All-Turn-It® Spinner

10070003

- Use for randomized selection
- Switch accessible

Toys



Switch Adapted Flappy Elephant

30000033

- Activate a switch connected to the left foot to play peek-a-boo
- Activate a switch connected to the right foot to play the song “Do your ears hang low”
- Two 1/8-in mono switch jacks



Switch Adapted Spunky Dog

30000034

- Activate a switch connected to the left foot to sing a counting song
- Activate a switch connected to the right foot to play tan alphabet song
- Two 1/8-in mono switch jacks



Switch Adapted Peek-A-Boo® Bear

30050319

- Activate a switch to play peek-a-boo
- 1/8-in mono switch jack



Switch Adapted Happy Birthday Bear

30000037

- Activate a switch to sing happy birthday
- 1/8-in mono switch jack