

Shape Detective Activity

Objective:

Students will identify and learn about different shapes using assistive technology.

Assistive Technology Used:

Sequential message communicators (e.g., Step-by-Step or QuickTalker).

Materials:

Various physical shapes (circles, squares, triangles, etc.)

Picture cards or visuals of shapes.

Activity Setup:

Record names and descriptions of each shape on the assistive technology device.

Instructions:

Display the physical shapes and picture cards in the classroom.

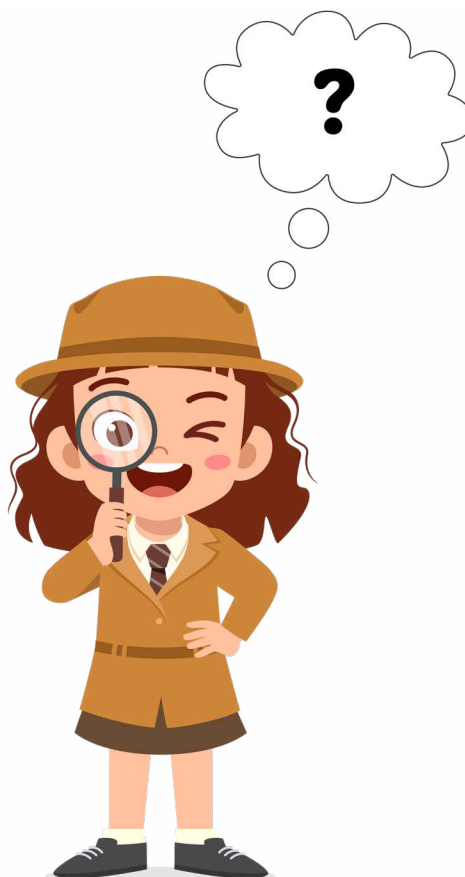
Students take turns using the communicator to announce a shape.

After the announcement, they find and hold up the corresponding physical shape or picture card.

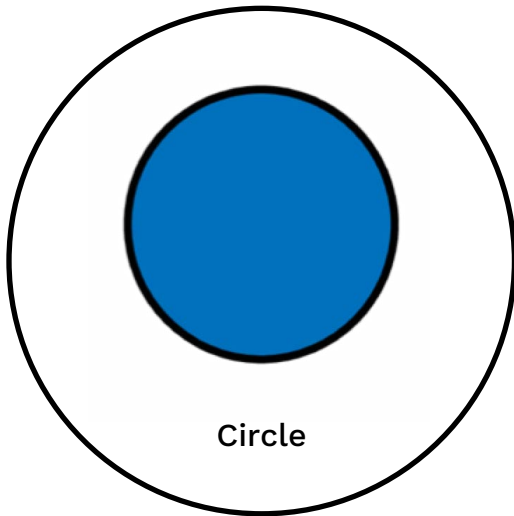
Discuss the properties of each shape (e.g., number of sides, corners).

Expected Outcomes:

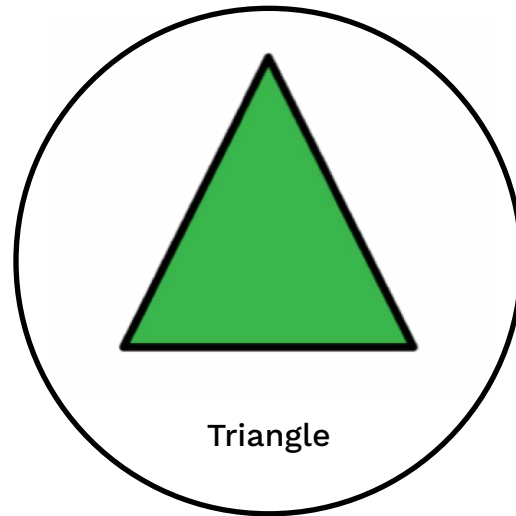
Students will become familiar with different shapes, enhancing their identification and descriptive skills.



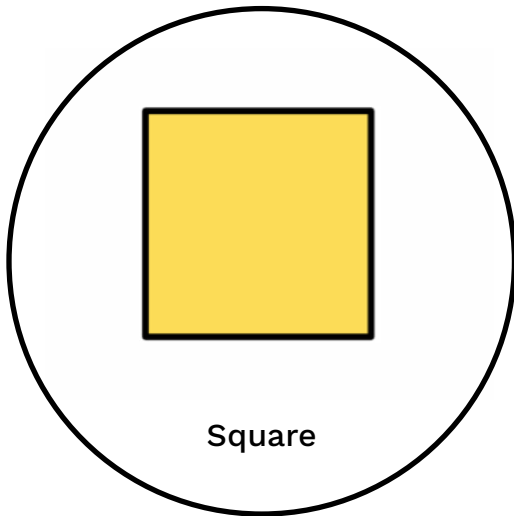
Shapes



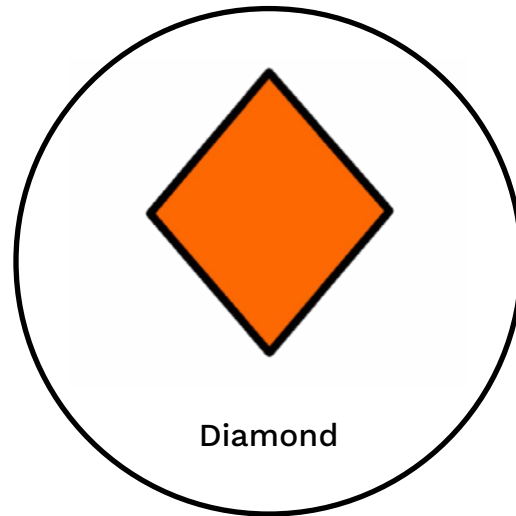
Circle



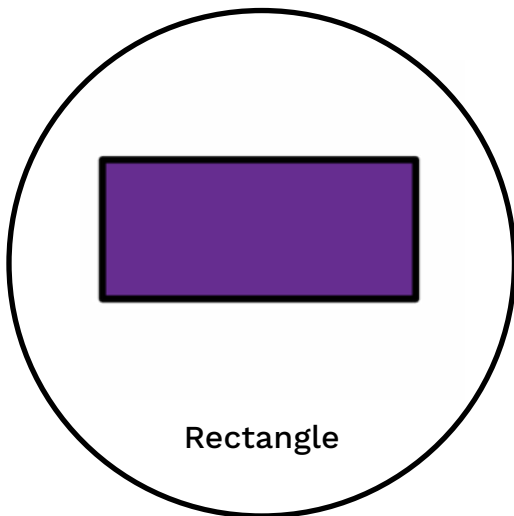
Triangle



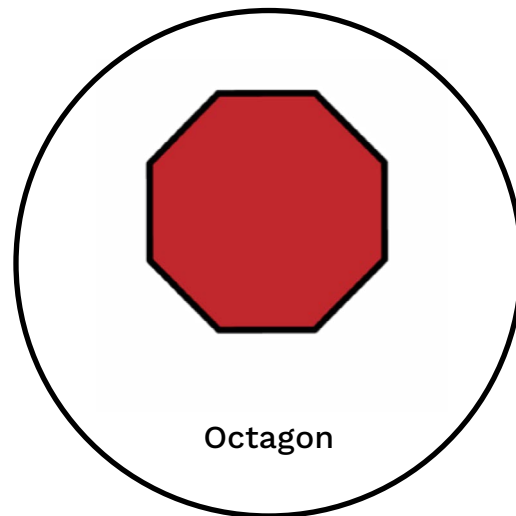
Square



Diamond



Rectangle



Octagon

This symbol overlay was created with the AbleNet Symbol Overlay Maker app! Symbols used are SymbolStix. Copyright © 2021 n2y®, LLC. All rights reserved. Used with permission. For more SymbolStix templates and symbols, go to www.n2y.com.